

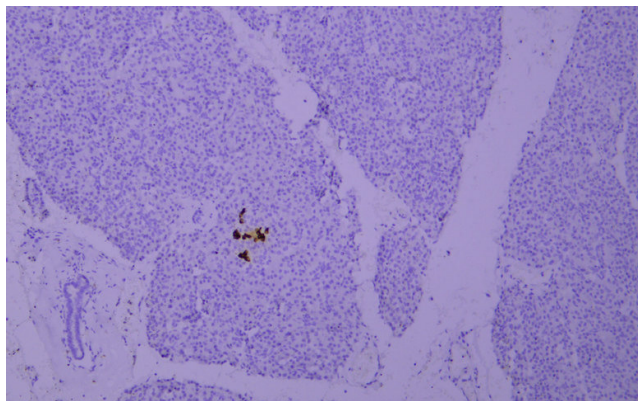


Somatostatin rabbit mAb(ABT81R)

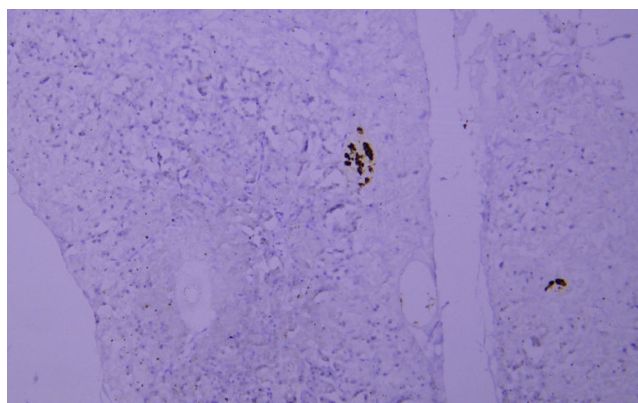
Catalog No	YP-Ab-15503
Isotype	IgG
Reactivity	Human
Applications	IHC;IF
Gene Name	SST
Protein Name	Somatostatin
Immunogen	Synthesized peptide derived from human Somatostatin
Specificity	This antibody detects endogenous levels of Somatostatin at Human
Formulation	Liquid in PBS containing 50% glycerol, 0.5% BSA and 0.02% sodium azide.
Source	Polyclonal, Rabbit,IgG
Purification	The antibody was affinity-purified from Cell supernatant by affinity-chromatography using specific immunogen.
Dilution	IHC-p 1:200. IF 1:50-200
Concentration	1 mg/ml
Purity	≥90%
Storage Stability	-20°C/1 year
Synonyms	Somatostatin (Growth hormone release-inhibiting factor) [Cleaved into: Somatostatin-28; Somatostatin-14]
Observed Band	
Cell Pathway	Secreted .
Tissue Specificity	Fetal brain,
Function	function:Somatostatin inhibits the release of somatotropin.,online information:Somatostatin entry,pharmaceutical:A synthetic analog known as octreotide or SMS 201-995 is available under the name Sandostatin (Novartis). It is used for the treatment of a variety of disorders including acromegaly and the symptomatic treatment of carcinoid tumors and vasoactive intestinal peptide tumors.,similarity:Belongs to the somatostatin family.,
Background	
matters needing attention	Avoid repeated freezing and thawing!
Usage suggestions	This product can be used in immunological reaction related experiments. For more information, please consult technical personnel.



Products Images



Immunohistochemical analysis of paraffin-embedded human Pancreas-1. 1, Antibody was incubated at 4° overnight. 2, Citrate buffer of pH6.0 was used for antigen retrieval. 3,Secondary antibody was diluted at 1:200(room temperature, 30min).



Immunohistochemical analysis of paraffin-embedded human Pancreas. 1, Antibody was incubated at 4° overnight. 2, Citrate buffer of pH6.0 was used for antigen retrieval. 3,Secondary antibody was diluted at 1:200(room temperature, 30min).